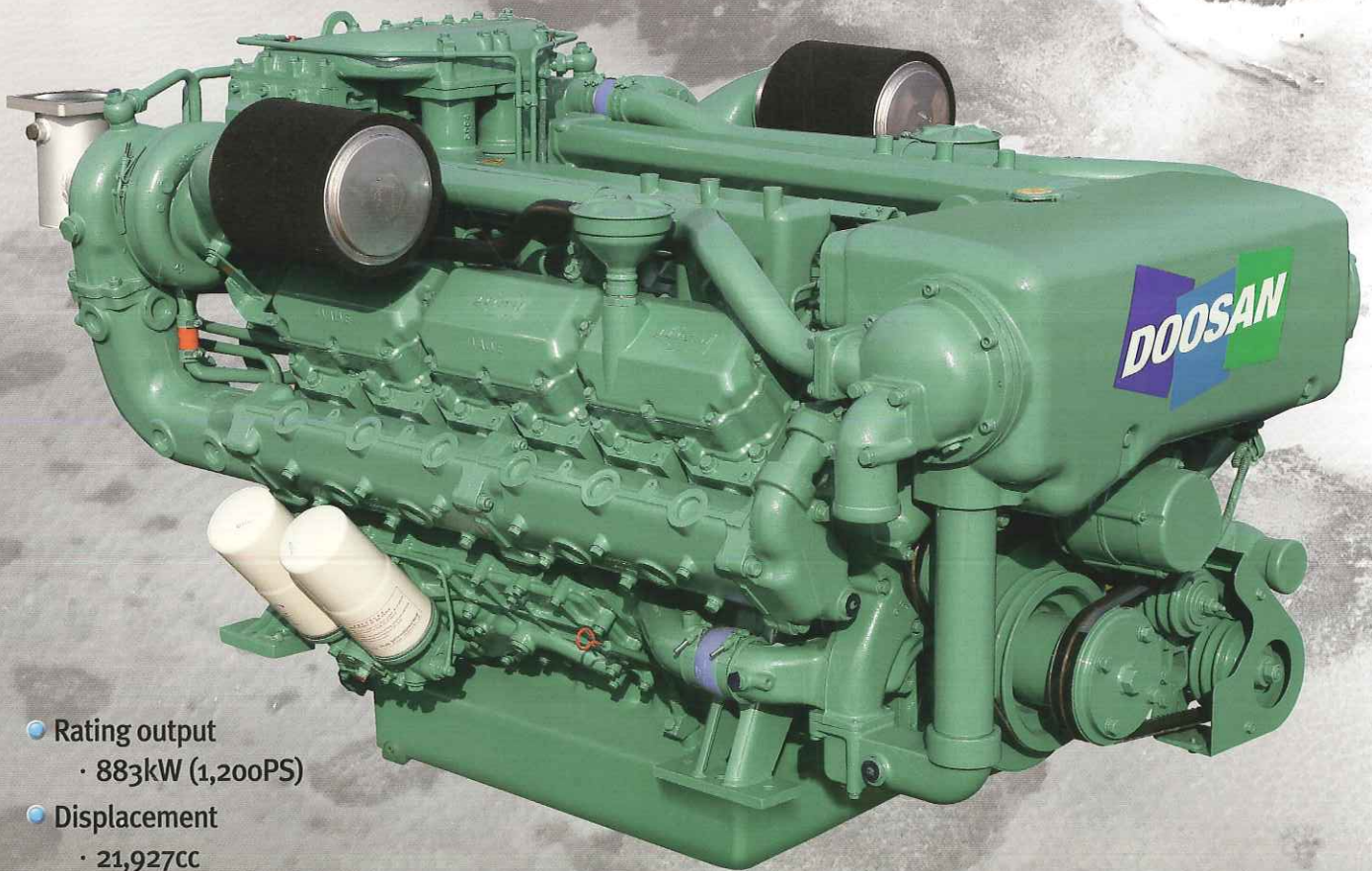




# Marine Diesel Engine 4V222TI

- Compact Design
- Excellent Performance
- Low Fuel Consumption
- Easy Maintenance



- Rating output
  - 883kW (1,200PS)
- Displacement
  - 21,927cc
- Dimension (L×W×H)
  - 1,874×1,243×1,548mm
  - Without Reduction Gear

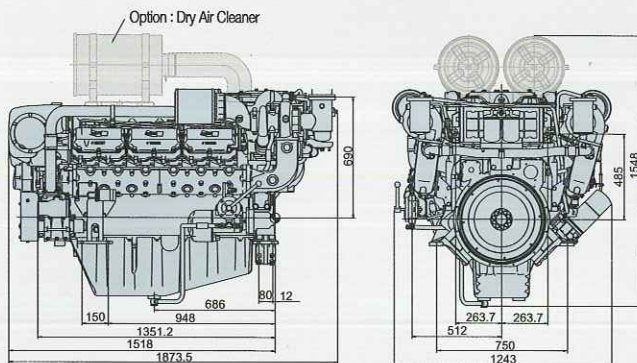
**Doosan Infracore**  
Engine

## Main Specification

Model	Units	4V222TI		
		4V222TIH	4V222TIM	4V222TIL
Engine type		4 valve, 4 cycle, V type, direct-injection, water cooled with turbo charger & inter-cooler		
Rating output	PS(kW) / rpm	800(588)/1,800	880(647)/2,100	1,200(883)/2,300
Displacement	cc	21,927		
Cylinder number - bore × stroke	mm	12 - φ 128 × 142		
Flywheel housing & fly wheel(inch)		SAE 1 & 14		
Low idling rpm	rpm	725 ± 25		
No load max. rpm	rpm	below 2,070	below 2,415	below 2,645
Compression ratio		14.3 : 1		
Firing order		1 - 12 - 5 - 8 - 3 - 10 - 6 - 7 - 2 - 11 - 4 - 9		
Governor type of injection pump		Mechanical variable speed (R.Q.V)		
Fuel consumption(only Ref.)@ rated power	g / PS.h	153	160	168
	Lit / h	146.24	168.22	200.72
Starting system		Electric Starting by starter motor		
Starter motor capacity	V - kW	24 - 6.6		
Alternator capacity	V - A	24 - 55		
Battery	V - Ah	24 - 200		
Cooling system		Indirect sea water cooling with heat exchanger		
Cooling water capacity	Max. / Min.	lit 103 / 92		
Fresh water pump type		Centrifugal type, driven by belt		
Sea water pump type		Bronze impeller type driven by belt		
Lubricating oil(Engine)	Pan capacity	lit Max : 40, Min : 33 (Engine total : 43)		
	Pressure	kg/cm <sup>2</sup> Full : 3.5, Idle : 1.2		
Direction of revolution	Crankshaf	Counter clockwise viewed from stern side		
Engine Size(L×W×H)	Without M/G	mm 1,874 × 1,243 × 1,548		
Engine dry weight	Without M/G	kg 1,920		1,960

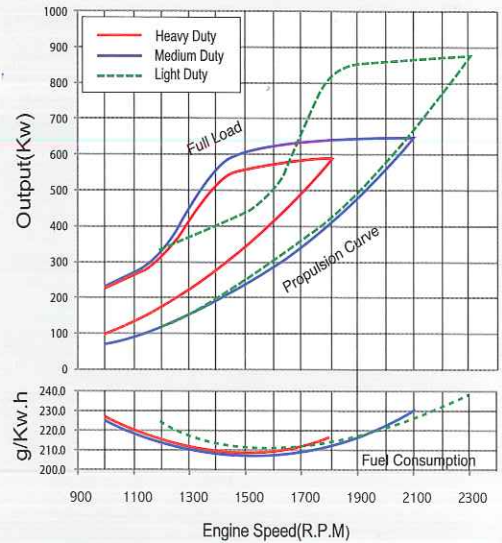
※H : Heavy Duty, M : Medium Duty, L : Light Duty

## Engine Dimension



## Performance Curve

- Heavy duty : 588kW(800PS)@1,800rpm
- Medium duty : 641kW(880PS)@2,100rpm
- Light duty : 883kW(1,200PS)@2,300rpm



## Marine rating to ISO 3046

### (1) Heavy Duty

- Operation hours : unlimited per year, unlimited per day
- Average load application : up to 90%
- Percentages of time at full load : up to 80%
- Typical gearbox ratio : 2.5~6
- \* Application : Fishing trawler, Tug boat, Pushing vessel, Cargo boat, Freighter

### (2) Medium Duty

- Operation hours : up to 3,000hr per year, up to 10hrs per day
- Average load application : up to 70%
- Percentages of time at full load : up to 30%
- Typical gearbox ratio : 2~3.5
- \* Application : Pilot boat, Escort boat, Passenger boat, Freighter, Ferry, Cruising vessel

### (3) Light Duty

- Operation hours : up to 1,000hr per year, up to 5hrs per day
- Average load application : up to 50%
- Percentages of time at full load : up to 20%
- Typical gearbox ratio : 1~2.5
- \* Application : Yacht, Cruising vessel, Fast boat, Fire pump

(Jan.2013)

## Doosan Infracore Engine

21/F, Doosan Tower, 18-12, Euljiro 6-ga, Jung-gu, Seoul, 100-730, Korea.  
Tel : 82 2 3398 8400  
Fax : 82 2 3398 8509  
Email : doosanmarine@doosan.com  
http://engine.doosaninfracore.co.kr

AUTHORIZED DEALER

\* Specifications are subject to change without prior notice.