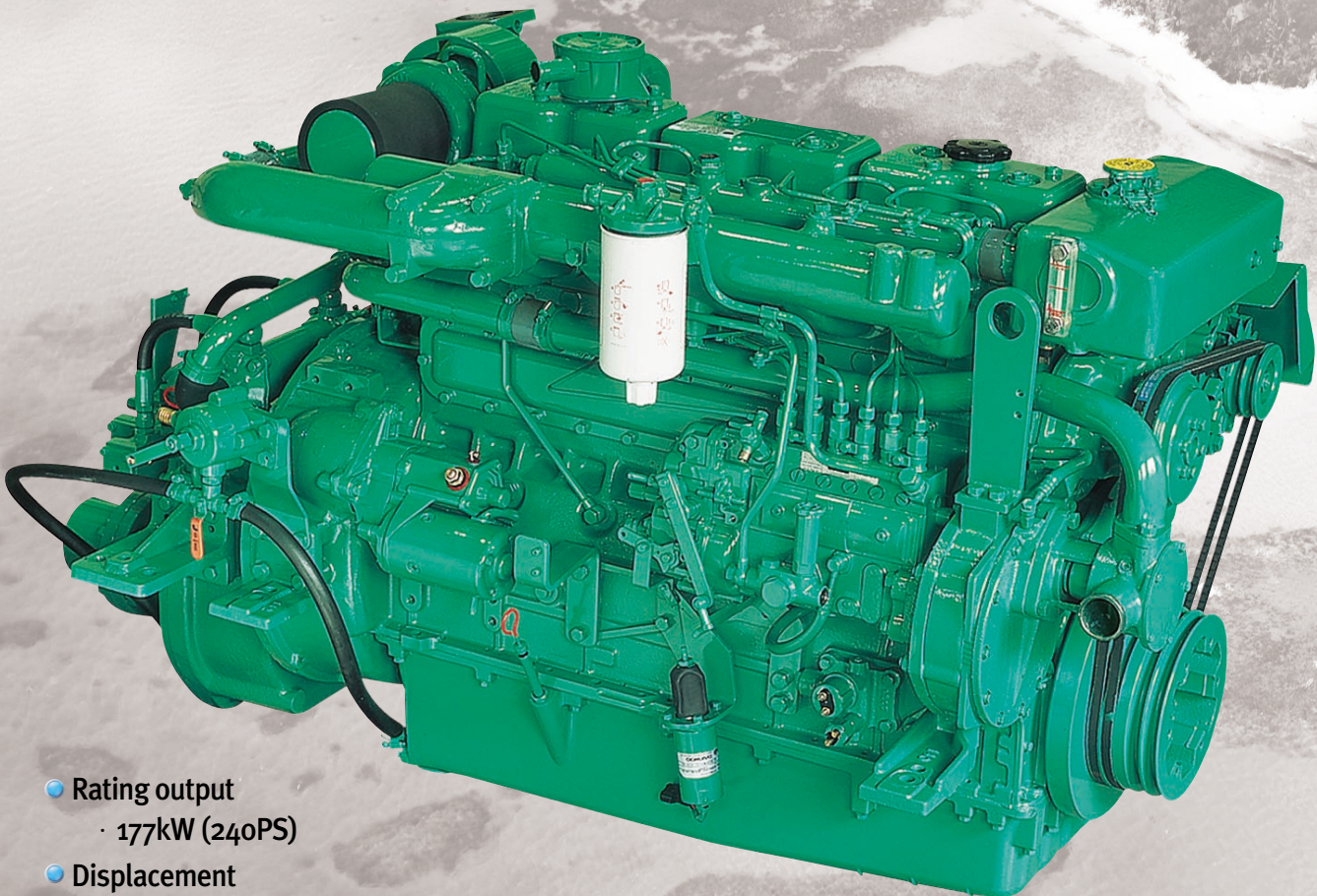


Marine Diesel Engine

L136T

- Compact Design
- Excellent Performance
- Low Fuel Consumption
- Easy Maintenance



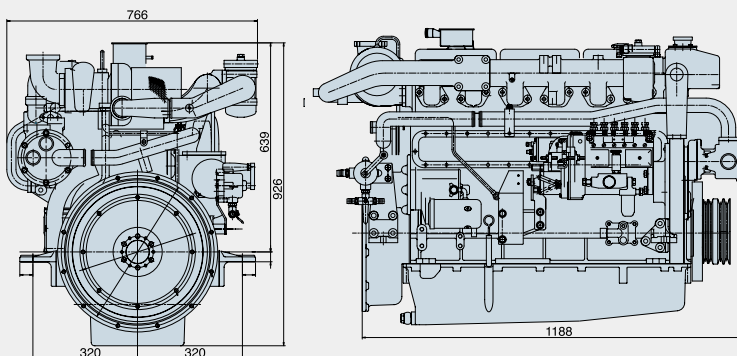
- Rating output
· 177kW (240PS)
- Displacement
· 8,071cc
- Dimension (L×W×H)
· 1,188 × 766 × 926mm
· Without Reduction Gear

Main Specification

Model	Units	L136T	L136TL
Engine type		4cycle, In line, direct-injection, watercooled with turbo charger	
Rating output	PS(kW)/rpm	200(147) / 2,200	240(177) / 2500
Displacement	cc	8,071	
Cylinder number - bore × stroke	mm	6 - 111 × 139	
Low idling rpm	rpm	725 ± 25	
No load max. rpm	rpm	below 2,400	below 2,750
Compression ratio		16.7 : 1	
Firing order		1 - 5 - 3 - 6 - 2 - 4	
Governor type of injection pump		Mechanical all speed (R.S.V)	
Fuel consumption (only Ref.)	g / ps.h	155	167
	Lit/h	37	48
Starting system		Electric Starting by starter motor	
Starter motor capacity	V - kW	24 - 4.5	
Alternator capacity	V - A	24 - 50	
Battery	V - Ah	24 - 100	
Cooling system		Indirect sea water cooling with heat exchanger	
Cooling water capacity	Max. / Min.	lit	27 / 25
Fresh water pump type		Centrifugal type, driven by V-belt	
Sea water pump type		Rubber impeller type driven by gear	
Lubricating oil (Engine)	Pan capacity	lit	Max : 23, Min : 17 (Engine total : 25)
Direction of revolution	Crankshaft		Counter clockwise viewed from stern side
Engine Size(L×W×H)	Without M/G	mm	1,188 × 766 × 926
Engine dry weight	Without M/G	kg	748

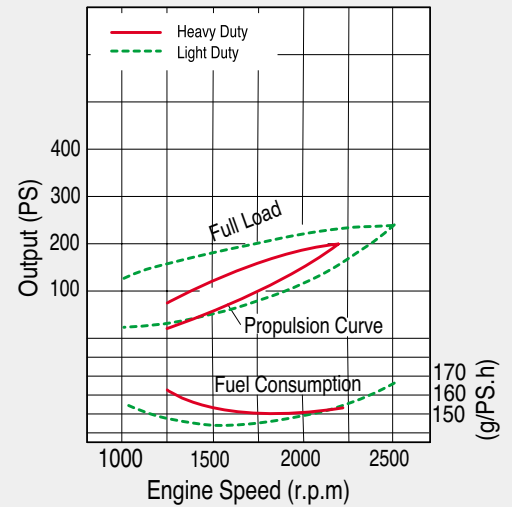
※ H : Heavy Duty, M : Medium Duty, L : Light Duty

Engine Dimension



Performance Curve

- Heavy duty : 147kW(200PS)@2,200rpm
- Light duty : 177kW(240PS)@2,500rpm



Marine rating to ISO 3046

(1) Heavy Duty

Operation hours are unlimited per year, at average load is up to 90 %, at full load is up to 80 %
 Typical gearbox ratio: 2.5 ~ 6
 (Fishing trawler, Tug boat, Pushing vessel, Cargo boat, Freighter, Ferry)

(2) Medium Duty

Operation hours are up to 3,000 per year, at average load is up to 70 %
 At full load is (up to 30 % / 4hrs per 12 hour operation period)
 Typical gearbox ratio: 2 ~ 3.5
 (Fishing boat, Pilot boat, Escort boat, Passenger boat, Ferry, Cruising vessel)

(3) Light Duty

Operation hours are up to 1,000 per year, at average load is up to 50 %
 At full load is (up to 20 % / 2hrs per 12 hour operation period)
 Typical gearbox ratio: 1 ~ 2.5
 (Light weight fishing boat, Yacht, Coastguard boat, Fast boat, Fire pump, Navy)

(Dec.2006)



**Doosan Infracore
Engines & Materials**

Seoul Office : Overseas Marketing & Sales
 Engines & Materials BG
 Doosan Infracore Co., Ltd.
 23rd Floor, Doosan Tower, 18-12, Euljiro 6-ga,
 Jung-gu, Seoul, Korea.
 Tel : +82-2-3398-8530~8546
 Fax : +82-2-3398-8509
Web site : <http://engine.doosaninfracore.co.kr>

AUTHORIZED DEALER

* Specifications are subject to change without prior notice.